



SPORT IN THE BOX - SWIMMING

Production and playout system for sports

Sport In The Box is a powerful production and playout system for sport that lets the user create engaging live content and output it to videoboard, in-house tv systems and streaming.

It handles playout of stored images and videos, live video inputs, replays and graphics, both full screen scoreboards and overlays for TV with lane presentations, result lists and more. With great flexibility Sport In The Box can output almost any format and resolution to adapt with custom video screens, making it the ideal solution for both smaller clubs and larger arenas.

Sport In The Box can have multiple live video inputs with SDI,HDMI or NDI and the output windows can be placed in any size and position on the desktop to adapt to the LED-screens used, removing the need for a video scaler.

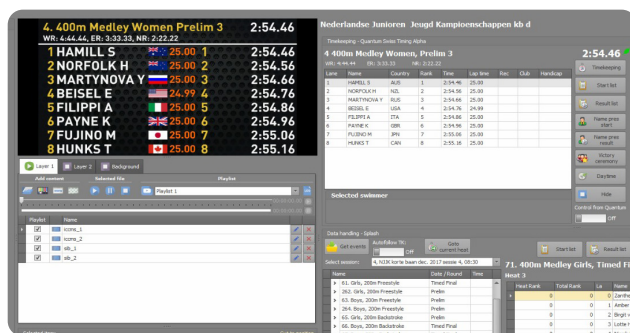
Swimming Interface

Sport In The Box can interface directly to the Quantum timer over serial to receive timing data with swimmer names, clubs etc. The generated graphics can then either be controlled using the interface in Sport In The Box manually or be slaved to run directly from the quantum interface.

To expand Sport In The Box abilities with graphics it can also be connected to the data handling software over network. Current support includes Hytek, Splash and Wingrodan data handling softwares.

TOP FEATURES

- Automatical control from Quantum
- 2 Graphic packs with customizable colors
- Timekeeping interface for Quantum
- Data Handling interface for Hytek, Spash & Wingrodan
- Output windows in any size and position on desktop removes the need for a scaler



Sport In The Box Swimming Interface

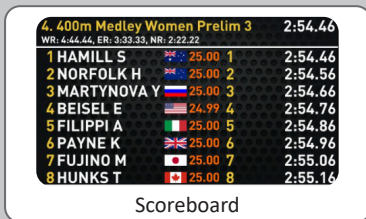


Sport In The Box Laptop & Rack Mount Computer

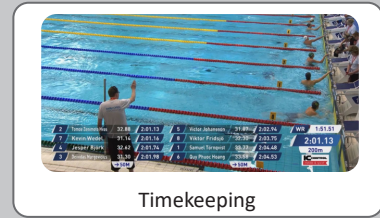
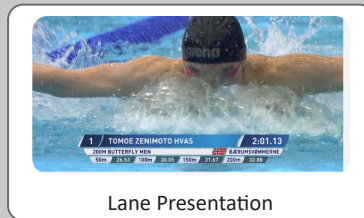
Graphics

Included with Sport In The Box for swimming are two template packs with graphics. One for full screen scoreboards and one with overlay TV graphics. Both sets can show lane presentations, start/result lists, victory ceremony's and live timing during races. In Sport In The Box you can also customize each templates with its selectable settings for colors, backgrounds and logos.

Custom graphics pack can be implemented upon request.



Fullscreen Scoreboard Template Pack - with customizable colors and backgrounds



TV Graphics Template Pack - with customizable colors and logos

Sport In The Box can have multiple screen controllers that render different content at the same time. This can be used to control multiple screens. For example a scoreboard and a perimeter LED. With the help of quickbuttons the user can quickly show animations and commercials synchronized in both screen controllers.

Together with compatible hardware, Sport In The Box can be used to send out key & fill signals with broadcast graphics to an upstream mixer.

Combined output can be used as a software scaler to combine multiple screen controllers and live inputs to one output. Scenes can be setup to change between different layouts for each part of your event.

Below is an example of a wide video wall showing competition logo, lane presentation and live video just before a start. By switching combined output scene, an animation is made to reveal the scoreboard shown during the race.



Custom Graphics for swimming event
(25x3m video wall with 5200x624 pixels)

Type	Sport In The Box FULL	Sport In The Box LIGHT
Sports Supported	All available sports	Swimming or Waterpolo
Number of Screencontrollers	Unlimited	1
Combined Output	YES	NO
Templates for Scoreboard	YES	YES
Templates for TV	YES	YES
KEY & FILL Output (SDI/NDI)	YES*	NO

Sport In The Box Version Comparison (*Requires Compatible Hardware)

Intellectual property of Swiss Timing. All rights reserved, especially those of reproduction and distribution to third parties.